

# SPR Surface Restoration Products CATALOGUE

(Printable)

06/05/09

**GOT UGLY, HARD TO CLEAN BATHTUBS**

**"ONE HOUR"**

**BATHTUB RESTORATION KITS**



**Restores Gloss to Porcelain or Fiberglass Tubs**

**NO Paint  
NO Mess  
NO Odors**

**READY TO USE THE SAME DAY**

***SPR Product Sales***

**Earth Friendly Bathtub Refinishing Products**

**World Famous Bathtub Refinishing Products & Supplies**

**"Since 1973**

**800-34-MR-TUB**

**800 346-7882**

**www.aok.org**

Contents .....	Page 2
Tub Restoration & Tune-Up Kits .....	Page 3 - 5
What tools will I need? .....	Page 6 - 7
Bathtub Paint Stripping .....	Page 8 - 9
Chip Repairs Porcelain & Fiberglass .....	Page 10
SlipGrip Tub Bottoms Liquid (roll on) .....	Page 11
Tile & Grout Restoration .....	Page 12
Cultured Marble Restoration .....	Page 13
Tub Chrome (drain & overflow cover) Dress-Up .....	Page 14
Classic Vinyl Tub Mats .....	Page 15
Vinyl Mats Sizes & Installation .....	Page 16
Mat Installation & Maintenance products .....	Page 17
Fiberglass Tub or Shower Bottom Rebuilding .....	Page 18-19
Stained Porcelain Tub Bottom Restoration .....	Page 20 – 21
<b>Color Changes Without Spraying .....</b>	<b>Page 22 - 23</b>
Roll-On Advantages .....	Page 24 - 25
Roll-On Tub & Tile Products .....	Page 26
Roll On Counter Top & Cabinet Refinishing.....	Page 27
CONTACT INFORMATION .....	Page 28

**IMPORTANT: See more products and more details at the web address below**

**See [WWW.AOK.ORG](http://WWW.AOK.ORG) for current price sheet**

# Tub-Restoration Kits

**GOT DULL UGLY HARD TO CLEAN TUBS?**

**Dull hard to clean tubs can be revitalized without refinishing them!  
Instantly restores, gloss and makes them easy to clean**



**SPR** Tub Restoration Kits contain everything you need to deep clean and restore the gloss to old bathtubs.

1. Thoroughly clean the tub with SPR clean-up concentrate and the included scrub pad.
2. Rinse the tub thoroughly.
3. Wipe it dry with a clean towel.
4. Wipe on the **ODOR FREE SPR Glastic Gloss Restoring Polymers** with the included applicator pad.
5. Wait five minutes between coats. Re-apply until last coat remains glossy after drying.
6. Wait five minutes.
7. Re-caulk tub if needed.
8. Your restored tubs are ready to use when caulk dries or after one hour.



Apply **SPR** SlipGrip coating or Vinyl mat to tub bottom after cleaning the tub and before restoring the tub.

## Tub-Tune-Up Kits

When restored tubs are NOT properly cleaned and maintained they become dull. SPR restored tubs never need to be full restored again. The SPR **Tub Tune-Up Kit** restores the gloss to previously restored tubs in about ½ the time it took to restore it originally.

**KEEPS RESTORED TUBS LOOKING LIKE NEW**

**Without having to totally restore them again**



Use only when absolutely needed this is **NOT** a daily, weekly or monthly cleaning product

Once the surface is restored to a like new look the **SPR** Tub Tune-Up Kit is used occasionally in the hotel and apartment industry to maintain the gloss on restored bathtubs. Refinishers can use this product to Tune Up any previously restored tub when customers want them restored again. This process takes only a fraction of the time it took to restore the tub originally.

**When to use this Kit. After tubs have been restored**

**Apartments:** Use Tub Tune-Up after each tenant moves out. Give every new tenant a like new tub.

**Hotels:** Use the Tub tune up Kit annually to keep tubs gloss at maximum.

1. Thoroughly clean the tub with SPR clean-up concentrate and the included scrub pad.
2. Rinse the tub thoroughly.
3. Wipe it dry with a clean towel.
4. Wipe on the **ODOR FREE SPR Gloss Restoring Clear Glaze** with the included applicator pad.
5. Wait five minutes and re-apply.
6. Wait five minutes.
7. Re-caulk tub if needed.
8. Your restored tubs are ready to use when caulk dries or after one hour.



# **Tub Restoration**

**and**

## **Tub-Tune-Up Maintenance Kits**

### **UGLY BATHTUBS MADE BEAUTIFUL AGAIN WITHOUT THE LINGERING ODOR OF SMELLY PAINT**

**What is it?** It is a self leveling hydrated acrylic polymer that seals and restores the tubs original look without spraying paint.

**How does it work?** The SPR polymer blend is wiped onto a clean surface; it penetrates and fuses to worn surfaces, restoring the original gloss. The fused polymers will never peel like a painted tub!

**What do I get?** Everything you need to restore your bathtubs without paint. Our kits contain all specialty cleaners, cleaning and applicator pads, surface sealing agents and tub bottom restoration covers which meet stringent ASTM safety standards. Complete instructions and tips on achieving the best results.

## **TUB RESTORATION & TUNE-UP KITS**

**Includes:** Tub cleaner, rust & stain remover, scrub pads, Tune-Up Glaze.

**Order # TKP-15 Porcelain tub restoration kit.**

**Order # TKF-12 Fiberglass tub restoration kit.**

**Order # TTU-15-30 Tub Tune-Up treats 15 to 30.** Maintains the gloss on **previously restored tubs**, Porcelain or Fiberglass. [White or color](#)

Important: These products can **not** change the color of the tub but restores a fresh pleasing appearance to virtually any dull, ugly, hard to clean tub.

## WHAT TOOLS WILL I NEED?



**Simple Basic Tools Are Essential for acceptable results. Assemble these tools yourself or order from SPR**

- Heat gun
- Clip on light
- Fan variable speed 8"
- Expandable shower rod
- Ground fault interrupter 6 plugs

All Kits come with full and complete instructions. As a beginner you can achieve acceptable results with SPR Kits and NO tools. However with a few basic tools your tubs will look much better and take less time to complete.

---

## PROFESSIONAL RESULTS

**#PTS Professional Tool Setup** (With or without training)



- ▶ Heat gun
- ▶ Light holder
- ▶ Detector light
- ▶ Tub dryer fan
- ▶ EZ Scrub handle
- ▶ Expandable light bar
- ▶ Hand Stain-Blaster pad
- ▶ SB Motor tool with Velcro hook
- ▶ Stain-Blaster disk (3 gradients) with Velcro backing
- ▶ Power strip for 6 plugs & ground fault circuit interrupter.

**Many individuals have learned to restore tubs the SPR way by purchasing the SPR products and following the easy to follow step by step instructions.**

**For OPTIMAL RESULTS the SPR professional tool setup and hands-on training at our headquarters is what it takes to become a truly, professional Wipe-On Refinisher in a very short period of time!**

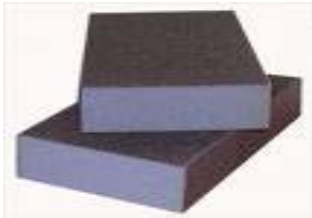
You will learn the detailed tricks of the trade and how to match colors when repairing chips without spraying.

**See price sheet for details on TRAINING & TOOLS**

# STAIN REMOVAL AIDS

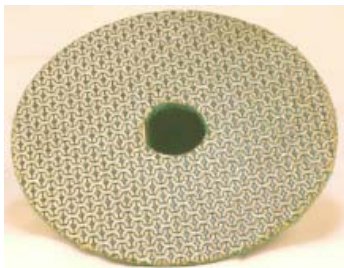
Order # HPG

**Hand Pad**  
(Course)



2.25" X 3.5 " Porcelain Streak & Stain Remover  
This is not conventional sand paper or sanding pads

Removes acid streaks and rust or mineral stains that can not be removed with the products contained in our Tub Restoration Kits



**STAIN BLASTER PADS**  
**Porcelain Streak & Stain Remover**

5 " abrasive disc  
Requires: SB1000 motor tool to be used

**SB** Velcro backed pads held to motor tool by Velcro hook

Removes difficult, heavy rust stains, acid streaks etc from porcelain surfaces. Smoothes rough worn porcelain surfaces.

Order # **GREEN** Course  
Order # **BLACK** Medium  
Order # **RED** Fine

Order # **SB1000**



**Motor Tool**  
**&**  
**Tub scrubber**

Orbital Non-Scratching action.

Holds SB abrasive disc or tub scrubbing pad to clean tub  
**DOES NOT LEAVE ABRASIVE STREAKS**

**SB** Velcro backed pads held to motor tool by Velcro hook

Removes difficult, heavy rust stains, acid streaks etc from porcelain surfaces. Smoothes rough worn porcelain surfaces.

110Volts AC double ground protection

Order # **SP6** Ground Fault Interrupter recommended (Has 6 plug in outlets)

# BATHTUB PAINT STRIPPING



**StripSafe™**

**If PAINTED**

**All paint must be stripped from tubs before restoring them.**

1. The old paint must be stripped off with our LOW odor, NO VOC, non hazardous stripper.
2. After removing all of the paint and thoroughly cleaning the tub.
3. SPR easy to apply wipe on finish gives tubs a Like New Look!
4. Your like new tubs will NEVER need to be stripped or painted again!



Order # SS      **StripSafe (5gal)**

**STRIPPER HEAVY DUTY**

Overnight Stripper for **Porcelain** & Fiberglass  
Removes virtually any bathtub paint

**When ease of stripping is important**

**VERY, VERY, LOW ODORS**

**NO VOC**

**Environmentally Safe**

**NO Methylene Chloride**

Safest method of tub stripping ever developed Will Not Burn Skin

1. Roll or brush it on
2. Place a sheet of plastic over it
3. Come back the next day
4. Peel away the paint
5. It could not be easier

**Capable of removing multiple coats of paint with one application**

Order # SS **StripSafe (5gal)**



# PAINT STRIPPING AIDS

## Super-Scower

&

## Heavy Duty Scower Pads

Included in all porcelain tub restoration kits



The combination of these two unique products makes short time of stripping **porcelain** tubs. After removing the bulk of paint these two products work together to remove and bind the stripper residue and all small specks of paint that stick to the tubs surface quickly and easily. The tub comes out paint **FREE** even specks are gone and its ready to restore.

Order # SS

---

## Multi Purpose Cleaner

for

## Difficult To Clean Surfaces

Mild acid solution cleans without harm



Order # MPC

---

## Rubber Gloves

12" long

A must when working with etch or stripper



Order # RG

We recommend wearing latex gloves under the the long rubber gloves just in case a pin-hole should develop in one of the long rubber gloves contaminating the interior with acid etch which is dangerous to skin and tissue.

---

## EZ-Vent

A must when stripping tubs

50' L X 10' D

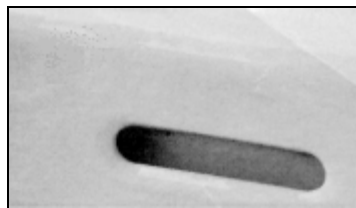
Moves 665 Cu Ft of air per minute

Removes fumes from work area



Order # EZ-Vent

# CHIP REPAIR KIT



**Order # CRSK**

**Repair kit for surfaces being restored**

**Do not** attempt to repair chips with automotive products and fillers such as Bondo etc. these products are no intended for use on bathtubs and will give less than satisfactory results.

SPR products are designed for the bath and kitchen restoration industry and give superb results.

We include detailed repair instructions with each tub repair kit. Please follow our repair instructions closely for best results.

Repair Kit Contains: All Items can be purchased separately after initial kit order

- Tints Red, Yellow, Orange, Blue Black
- Instructions
- Mixing sticks
- Clear hardener
- KF-40 White Filler
- Assorted sand paper
- Ceramic mixing pallet
- Rubber sanding block
- **2-W** Wipe on blemish blender (white, off white yellow, off white grey)

## Porcelain & Fiberglass Touch-up

Aerosol



Used for touchup on porcelain & fiberglass after filling with chip filler and sanding with proper sandpaper grades for a perfect repair.

**Order # TUW** (WHITE)

**Order # TUA** (ALMOND)

**Order # TUC** (CLEAR) Restores gloss to repaired areas

# Slip-Grip

Give Tubs & Showers A Slip Resistant Safety Bottom

Looks and feel like a factory installed tub bottom



Order # **KF-43 Surface Restorer** conceals Black Wear-Through Marks before applying Slip Grip. Two part white, super bonding paste hardens and ready to sand in approximately 3- 5 minutes.

## SlipGrip

**COVERS WORN BOTTOMS, NO MESS, QUICK DRY**

## SlipGrip GREEN

**NO ODOR**

**Very fast drying** (approx. 15 min) **NO solvent odor**

Order # **SGGS Slip-Grip-Green-Improved Tub Bottom Treatment (Starter Kit)**  
Includes: Roller handle & universal template for outlining tape at tub ends.

Order # **SGGR Slip-Grip-Green-Improved Tub Bottom Treatment (Refill Kit)**  
Refill Kit contains everything that is in the Starter Kit except the roller handle & universal tub template.

## SlipGrip ORIGINAL

**LOW ODOR**

**Very fast drying** (approx. 15 min) **Some solvent odor but quick dissipation of odors**

Order # **SGKS Slip-Grip-Standard Tub Bottom Treatment (Starter Kit)**  
Includes: Roller handle & universal template for outlining tape at tub ends.

Order # **SGKR Slip-Grip-Standard Tub Bottom Treatment (Refill Kit)**  
Refill Kit contains everything that is in the Starter Kit except the roller handle & universal tub templates.

# TILE & GROUT

## Restoration



Ceramic Tile Walls & Floors



Restored To Look Like New

### CERAMIC TILE & GROUT WIPE-ON RESTORATION

#### CERAMIC TILE AND GROUT RESTORATION KITS

Easily restores a like new look without painting or removing the old grout!

Kits Restore up to 400 SQ FT of ceramic tile

You can treat up to 11 baths with 4' high tile around a standard 5 Ft tub



#### GROUT COLORS CAN BE CHANGED

**IMPORTANT:** Grout can be restored to its original color or changed from a lighter color to a darker color without removing the old grout. It is not recommended to attempt re-coloring a darker color grout to a lighter color unless you are prepared to remove the old grout and re-grout with a darker grout color. **Lighter colored grout can be re-colored to any of the darker colors below.**

				
Black 178	Rhapsody Blue 209	Bone 021	Candlelight 202	Bisque 345
				
Daydream 225	Mocha	Linen 222	Light Mink 190	White 020
				
Loganberry 210 (dark maroon)	Rain Forest 211 (dark green)	Silver 165	Spring 227	Bright White White Heat 208

Order # **GBT1P** Grout Brite Grout colorant specify color on the order form.

Order # **TGK-F** Floor tile restoration Kit includes non slip sealer.

Order # **TGK-W** Wall tile restoration Kit includes high gloss wall tile sealer.

Order # **TGK-FW** Floor and wall Kit contains products for both.

# CULTURED MARBLE

Restoration

NO ODORS NO MESS CAN USE THE SAME DAY



## Cultured Marble Restoration

Order # **CMK400**



### **VANITY TOPS WITH CRACKED BOWLS SHOULD BE REPLACED**

One of our professional applicators can replace the cracked bowl without removing or replacing your vanity tops.



Restore **SCRATCHED, WORN, BURNED** cultured marble surface to a NEW SEMI GLOSS FINISH resembling the more expensive Corian® look.

Kit includes marble resurfacing glaze, and various other products required.

Each kit restores up to 400 SQ FT of cultured marble.

Example: (33) 4' X 2' vanity tops.

**Chips on tubs, sinks & marble vanity tops can be made with Chip Repair Kit.**

Order # **CMK400** Cultured Marble Kit

Order # **CRSK** To repair chips requires chip repair kit.

# Chrome Dress-Up Kits

## UGLY CHROME TRIM Ruins The Appearance of Your Tubs?



New drain and overflow cover instantly without a plumber



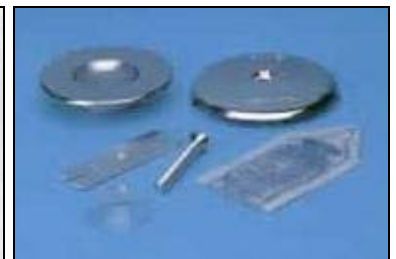
Ugly worn drain



Drop in a new cover



Installed Drain Cover



Drain & Overflow-Cover Kit

**SPR** Drain Dress-Up Kits contain everything you need to beautify your ugly worn or damaged chrome tub trim. **Covers all drain outlets with an outlet hole larger than 1.5 INCHES.**

### ■ NO Plumber Needed To Install The New Drain Outlet Cover

1. Clean the old drain cover.
2. Wipe it dry with a clean towel.
3. Apply a bead of the included adhesive to the underside of the new cover.
4. Drop in the new **SPR Drain Dress up Cover**
5. Allow the adhesive a few hours to set and its ready to use.

### ■ NO Plumber Needed To Install The New Drain Overflow Cover

1. Remove the old overflow cover.
2. Clean the area around the overflow hole.
3. Broken screws in the old cover are no problem since the new cover does not use the old screw holes.
4. Attach the new overflow cover to the included brace and place it in the overflow hole then tighten the screw.
5. Your tubs chrome has been renewed in a few minutes an now ready to use.

Order # **DDUKC** (Drain dress-up kit chrome covers drain only)

Order # **TDUKC** (Tub Dress-up kit chrome covers drain and replaces overflow cover.)

Order # **TDUKP** (Tub Dress-up kit **polished brass** covers drain and replaces overflow cover.)

# Vinyl Tub Mats

Does This Look Like Your Tubs?



Give A Like New Look to any, UGLY, Grungy Looking Tub!

**YOUR TUBS CAN LOOK LIKE THIS**



**SPR Tub Clean Up System  
&  
Easy To Apply Safety Mats That Really Work!**

**Will Not Stain, Mold, Mildew, Discolor or Peel up**

**GUARANTEED ONE FULL YEAR!**

COLOR

**WHITE, CLEAR & ALMOND**

# MAT SIZES & INSTALLATION

## Slippery Tub Surfaces Made Safer Instantly

1. Measure your tub area to be covered
2. Clean and dry the surface. Gently peel back one inch of the paper backing along the back edge of the mat being careful not to touch the adhesive backing. Position the mat and press the edge of the mat into place.
3. Reach under the mat and grasp the loose end of the paper and peel it back slowly while you continue to press the mat into place.
4. We recommend a non marking acrylic brayer (roller) for best adhesion and rolling out all air bubbles during installation.



Measure



Peel off paper



Press with roller



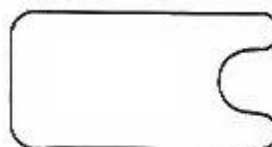
Non Marking Roller Order # **NMR**



Rectangle Style

Measure in Inches

- 16 X 34
- 16 X 36
- 16 X 38
- 17 X 36
- 18 X 40
- 18 X 45
- 18 X 48



Drain Wrap Style

Measure in Inches

- 16 X 34
- 16 X 36
- 16 X 38
- 16 X 39
- 16 X 42
- 16 X 44
- 16 X 46
- 17 X 44
- 17 X 46
- 18 X 45
- 18 X 48

**CUSTOM SIZES AVAILABLE on request**

**IMPORTANT:** To comply with ASTM Regulation F-462-79, be sure the size selected is no more than 1.5 inches from the sides of the tub and drain. **All tubs with a factory non-skid etching must be completely covered.**

**Order # See order sheet for prices**



# **BEFORE MAT INSTALLATION TUBS MUST BE CLEANED PROPERLY**

We Recommend SPR Tub Clean up products for best results

## ***SPR Step 1 Tub Cleaner***

Super cleans porcelain or fiberglass tubs, promotes adhesion for vinyl mats

Removes:

**Dirt,  
Body Oils,  
Soap Scum,  
Mineral Deposits**

***SPR Step 1 Tub Cleaner*** concentrated tub cleaner. Use 1 to 3 ounces per tub depending on condition.

Requires SPR White Scrub pads below. (Will not scratch porcelain or fiberglass tubs)

**Order # S1MPC cleaner**

---

## **SCRUB PADS**



White Non Scratching Fiber Scrub Pads

**Order # WP**

---

***GluAway***<sup>TM</sup>

## **ADHESIVE REMOVER**

Quickly and easily removes old adhesive

Left behind when removing old tub decals, mats etc.

**Safe for use on porcelain or fiberglass tubs**

**Order # GluAway**

---

## **TUB MAT MAINTENANCE**

Easy to clean with any good liquid detergent and **SPR STIFF BRISTLE** brush

Comfortable, easy to grip handle for fast, efficient cleaning



**Order # SB brush**

# Fiberglass Tub or Shower Bottom Rebuilding

**Cracked, Crushed, Soft Bottom etc.**

**Absolutely NO Spraying Necessary!**



Cracked tub bottom in two locations

Cracks or holes in the bottom of a fiberglass tubs or shower unit make them un-usable due to leaking and seepage.



Close up of a cracked area



Rebuilt and Slip-Grip coated



*Bottom Rebuild Kit*



Looks and feels like a factory bottom

**NO Unpredictable Expandable Foam Injection Used**

**SPR rebuilt tub and shower bottoms are rock hard and will not re-crack!!!**

**SPR Low odor resins are safer to use  
Lower flammability rating than polyester resins**

**Order # FTub** Fiberglass tub 16" X 34"

**Order # FShower** Fiberglass shower 36" X36"

**Order # FCustom size** Fiberglass tub, shower etc.

**Order # DR** Aluminum roller for removing air bubbles from bottom rebuilding resin (reusable)

# SPR Bottom Rebuilding Kit

**REBUILD ANY TUB OR SHOWER BOTTOM  
AND HAVE IT BACK IN OPERATION THE SAME DAY!**

**This can be done in conjunction with or without restoring the entire tub using the  
SPR Tub Restoration Products**

## **Easy to do once you understand how it works:**

- Foam injection under the tub or shower bottom for added support is not necessary. There are some installers who prefer to inject foam for added support though it is not necessary to do so.
- No need to get to the back or under the tub to insert supports.
- NO drain removal necessary.
- Used on thousands of damaged fiberglass bottoms and never a redo!

## **Included all necessary products:**

- No mess
- Low odors
- Low Flammability
- Includes instructions
- Virtually NO cleanup since everything is disposable.
- Place all used items in included plastic bag for disposal.
- Can be used on any brand and any conventional size tub or shower bottom.

## **INCLUDES EVERYTHING YOU NEED TO REBUILD A TUB BOTTOM**

- **Fiberglass resin (low odor)**
- **Fiberglass pre cut base and pre cut finishing cloth**
- **Resin brush and foam roller**
- **Complete instructions**

**Optional professional resin roller removes bubbles leaving a very smooth surface.**

**Order # DR** Professional reusable roller for removing air bubbles from bottom resin.

**IMPORTANT:** After bottom is completely rebuilt it should be coated with **Slip-Grip™** slip resistant coating for best appearance. See **Slip-Grip** on page 8.

**Order # FTub** Fiberglass tub 16" X 34"

**Order # FShower** Fiberglass shower 36" X36"

**Order # FCustom size** Fiberglass tub, shower etc.

**Order # DR** Aluminum roller for removing air bubbles from bottom rebuilding resin (reusable)

# Porcelain Tub BOTTOM Restoration

**Dirty, Stained Tub Bottoms  
Spoil The Appearance Of Any Bathroom**



Factory installed anti slip and Etched Tub bottoms are easily stained and impossible to clean

**TUB BOTTOMS CAN LOOK LIKE NEW AGAIN**

**This is NOT A Tub Mat  
Absolutely NO Spraying Necessary!**



*SPR Restored Tub Bottom*

**GET A LIKE NEW LOOK**

**REMOVE ALL STAINS & KEEPS TUB BOTTOMS LOOKING LIKE NEW**

**This can be done in conjunction with or without restoring the entire tub**

Order # TBR15S Starter Kit  
Order # TBR30 Refill Kit

# SPR Tub Bottom Restoration

Are The Key To Beautiful Tubs and Complements  
**NOT**  
Dirty Tub Bottoms and Complaints

**Easy to do NO experience necessary for professional results:**

- NO mess
- NO odors
- NO Flammability
- Without a Tub Liner
- Ready to use the same day
- Includes detailed instructions
- Virtually NO cleanup since everything is disposable.
- Place all used items in a small plastic bag for disposal.
- Can be used on any brand and any conventional size white porcelain cast iron or steel tub.



**IMPORTANT:** After bottom is completely restored and sealed it is easy to maintain and keep clean with a nylon brush and any mild liquid cleaner.

All of this can easily be completed in a few minutes. The tub can be used the same day.

Order # TBR15S Starter Kit  
Order # TBR30 Refill Kit

# Surface Recoloring Products

## Change Colors

“Without Spraying”

**GOT UGLY, OUTDATED COLORS**  
**RE-COLOR**  
**BATHTUBS, TILE & COUNTERTOPS**



**"ROLL-ON" A NEW COLOR**

**NO MESS**

**NO SPRAYING**

**READY TO USE THE SAME DAY**

**CAN BE USED IN OCCUPIED APARTMENTS**



***SPR Product Sales***  
**Surface Recoloring Products**



## UNIQUE ROLL ON PRODUCTS

**THEY WILL LOOK AS GOOD IF NOT BETTER THAN MOST SPRAY JOBS**

**This means you can produce quality work with:**

- **Less Mess**
- **Less Hazards**
- **Less Cleanup**

We supply everything you need to roll on a beautiful finish and when you have completed the job, everything you used is disposed of.

**Mixing cups and Disposable roller included.**

- **NO OVER SPRAY**
- **NO GUN CLEANUP**
- **NO MASKING PAPER**
- **Very little MASKING TAPE**

**Speed-Glaze™** High Gloss, Quick Dry is easy to apply, looks and feels like a sprayed tub but without the mess. It dries in about 30 minutes after application and can be use after 4-6 hours or the same day.

Apartment's love it because the odor dissipates quickly and it can be used quicker than other coatings.

**Value-Glaze™** Good Gloss, for Economy Minded Customers. It is easy to apply, looks and feels like a sprayed tub but without the mess. It dries overnight and can be used the next day. Apartments love its tough finish even when cleaned with Comet , Ajax abrasive cleaners etc..

Like every thing else, rolling requires a little practice to become a professional but after several tubs you will realize it is far easier than spraying, since drips or runs can easily be corrected immediatly with the roller. The finish is self leveling which results in a very smooth, high-gloss finish!

# ROLL- ON ADVANTAGES

## REFINISH TUBS, TILE & COUNTERTOPS

The following color change projects  
are done with **SPR ROLL-ON FORMULA** quick dry coatings



**SPR ROLL-ON products** DO HAVE (SOME) ODORS

THEY ARE NOT SPRAYED ON AND THEY MAKE NO MESS

<p><b>NO</b> Runs <b>NO</b> Drips <b>LOW</b> Fumes <b>NO</b> Over Spray</p>	<p>"A Like New Look" <b>SPR</b>® EXCLUSIVE ROLL ON PRODUCTS</p>	<p><b>LOW</b> Hazard <b>NO</b> Clean up afterwards <b>NO</b> Spray-Gun maintenance</p>
<p><b>Nu-Mica™</b> Counter Top Roll On Lightly textured surface looks-feels great.</p>	<p><b>ET One-Coat™</b> Tile Roll On Easy refinishing covers old tile and seals grout lines</p>	<p><b>Speed Glaze™</b> Tub Roll On Super high gloss finish quickly covers any ugly color</p>

**MOST SURFACES ARE DRY TO TOUCH IN 30 MINUTES**

**Odors Quickly Dissipate**



# **ROLL-ON ADVANTAGES:**

## **SAFER FOR:**

**Customer**

**Technician**

**Environment**

**Less COST**

**Fewer complaints**

**Less product waste**

**ALL METHODS EASY TO LEARN**



*SPR Speed Glaze & SPR Value Glaze*

**NO OVERSPRAY, NO CLEANUP, NO MESS**



**These products were made to be rolled on**

**1. *Speed Glaze* is a self leveling hybrid urethane which produces a very smooth, high-gloss finish!**

**2. *Value Glaze* has a good gloss and is a favorite for apartments since it is a Very, tough finish. NO primer or etching required!**

# ROLL ON TUB & TILE PRODUCTS

## Value-Glaze

### Tub & Tile

Requires NO Primer Coating  
Medium Gloss Glaze  
(24 hr dry time BEFORE USE)



This product can be used for underwater situations after it dries.

Stock color white. Can be tinted any color with our tint package.

***This is a tough product that is easy to use and quick to apply. It dries fast and is great for hotels and apartments.*** There is nothing else like it, any where at any price. Used successfully for 30 years on thousands of tubs. Many of the original coated tubs still look great today.

( Requires KF-3 reducer)

**Order # ET**

---

## Speed-Glaze®

a self leveling hybrid epoxy which produces a very smooth, high-gloss finish!

High Gloss Quick Dry Glaze

(Requires Speed Prime) ( Requires KF-3 reducer)



Stock color white, almond & mocha. Can be ordered in American Standard® colors or tinted any color with our tint package.

**Dry to touch in 30 minutes**

***This is a tough product that is easy to use. It dries fast and is easy to apply.*** There is nothing else like it, any where at any price. Used successfully for many years on thousands of tubs. Many of the original coated tubs still look great today.

**Order # KF-150** white, almond or mocha **Speed Glaze**

---

## Speed-Prime®

Clear adhesion booster

***Wipe it on the surface before glaze.***

Used successfully for many years on thousands of tubs.



***applying the***



**Order # SP**

# Counter Top & Cabinet RECOLORING

**ROLL ON**

**NO OVERSPRAY, NO CLEANUP, NO MESS**



*Nu-Mica* Matte Gloss Countertop Glaze

**Order # KF-150** Colors: WHITE, ALMOND, MOCHA **Speed Glaze** a self leveling hybrid epoxy which produces a very smooth, high-gloss finish!

**Order # Nu-Mica** Colors: WHITE, ALMOND, MOCHA **Nu-Mica Counter Glaze** is a self leveling hybrid urethane, Matte Gloss for counter surfaces. Looks and feel like the texture of Formica, Wilson art etc.

**IMPORTANT:** When restoring cabinets always coat cabinets with *Speed-Glaze* KF-150 (high gloss) and the counter surfaces with *Nu-mica KF-NuMica Countertop Glaze* (matte gloss). Even if cabinets and counters are the same color, giving a different texture to the two surfaces makes the job look more professional. **If both surfaces have the same texture the overall project will look like it was painted.**



**Nu-Mica Counter Top Glaze** (matte gloss)

Quick Dry, Matte & High Gloss

**Dry to touch in 30 minutes**

Provides a light texture

**Looks like the real thing (not painted!)**

Custom colors available in volume



Stock color white, almond & mocha. Can be tinted any color with our tint package

**Order # NuMica**

# ***SPR Product Sales***

**World Famous Bathtub Refinishing Products & Supplies**

**"Since 1973**

**SPR International Inc.**

**320L Northpoint Pkwy**

**Atlanta GA 30102**

**800-34-MR-TUB**

**800-346-7882**

**www.aok.org**

Type web address into the address bar then click Enter

**Earth Friendly**

**Surface Restoration & Repair Products**

See our web page for photos, videos and much more  
**Current, printable price list available on our website**

**[www.aok.org](http://www.aok.org)**

**NOTES:**